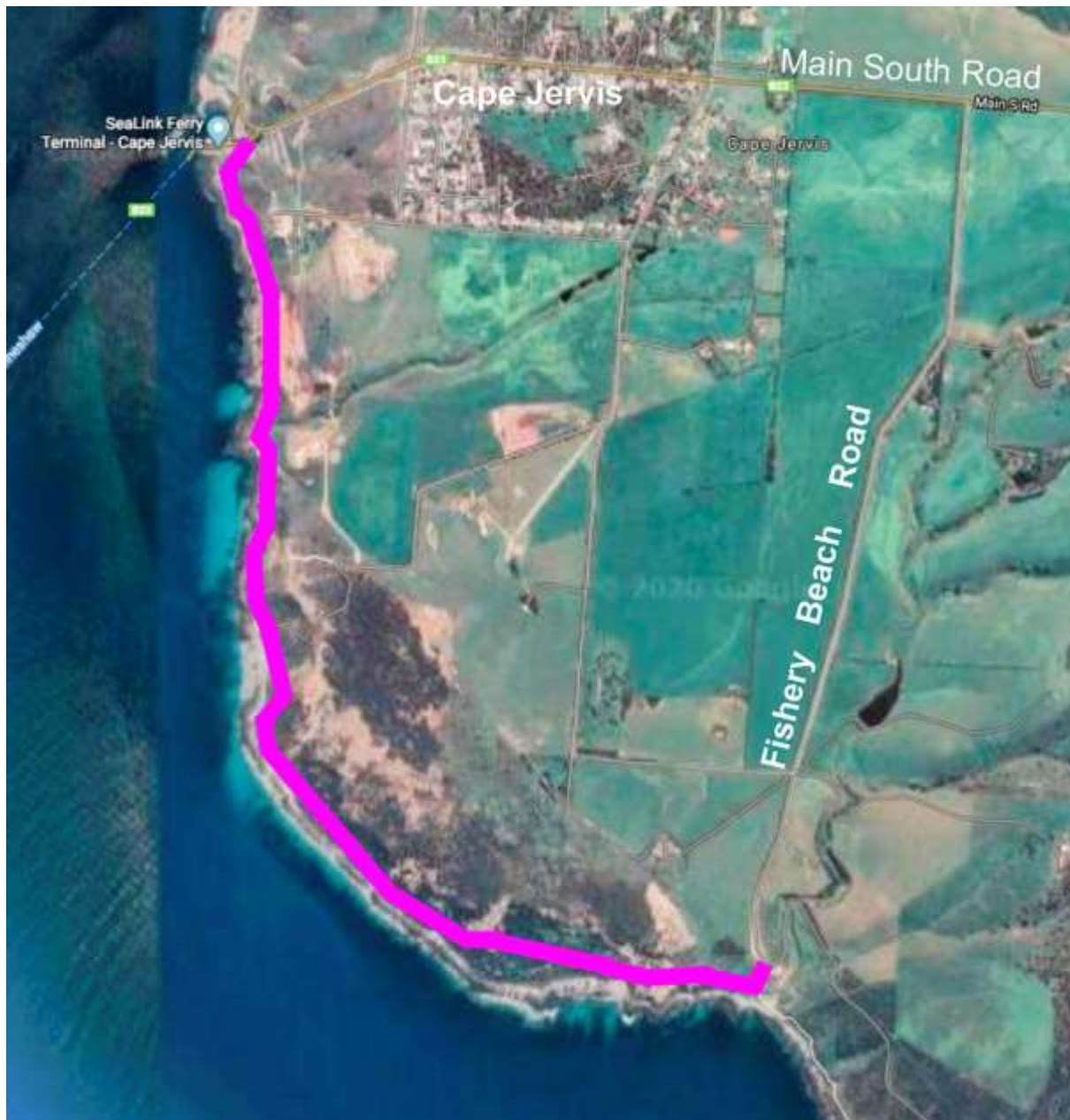


16. CAPE JERVIS COAST TO FISHERY BEACH

Terrain: Easy

Distance: 5 km one way

This is a delightful walk along the coastline which is part of the Heysen Trail (<https://heysentrail.asn.au/>), so you can follow the red and white trail markers. Park in the Cape Jervis public carpark (near the ferry terminal) and/or Fishery Beach carpark.



Map prepared using a Google Maps base.

© 2022 Fleurieu Environment Centre
<https://www.flec.com.au/>