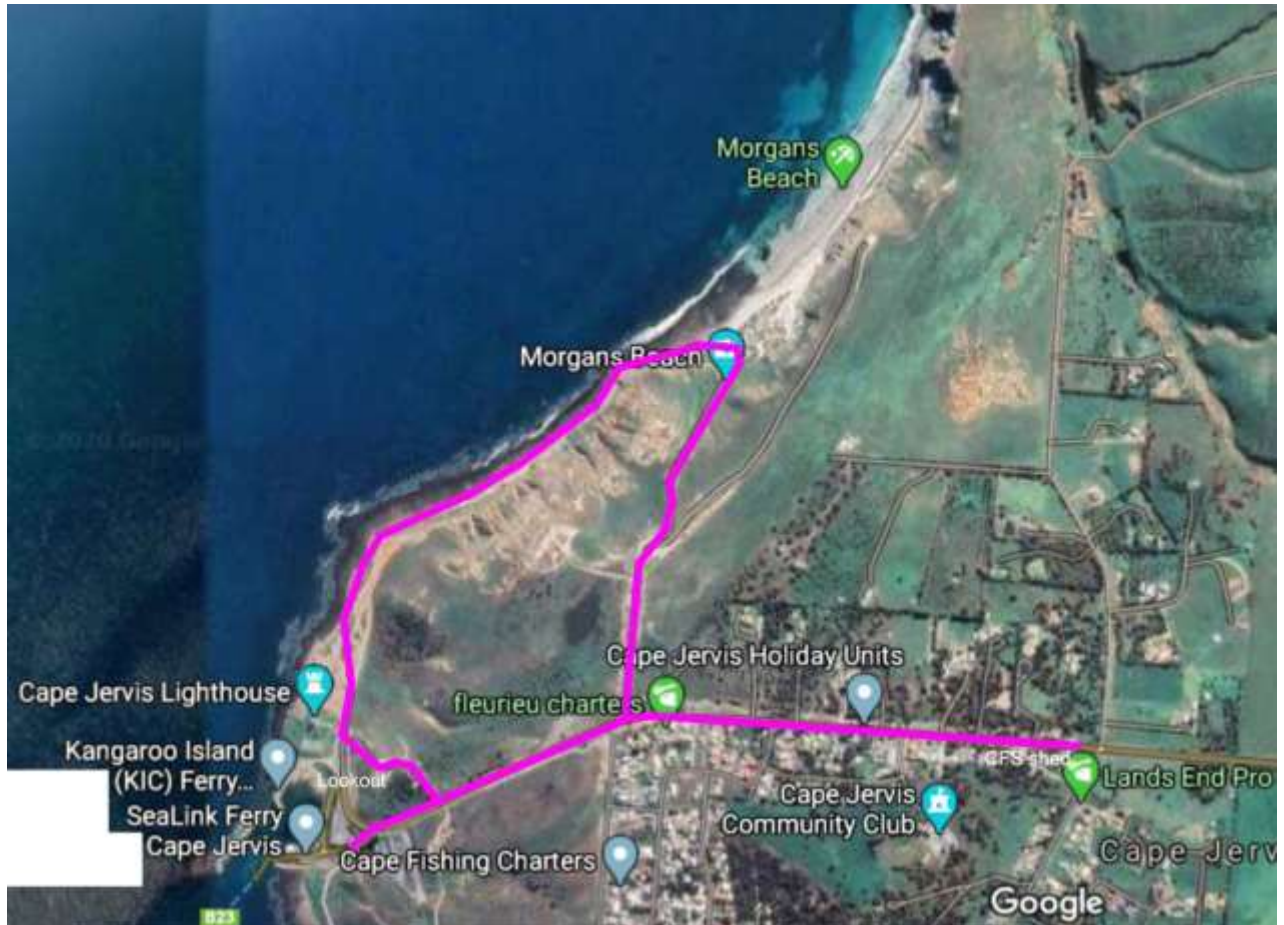


## 15. CAPE JERVIS NATURE TRAIL VIA MORGANS BEACH

**Terrain: Easy to moderate**

**Distance: 3.5 km circuit**

As you approach Cape Jervis, just past James St on your left, park on the Council Reserve next to the CFS shed on the left of Main South Road. Cross the road and follow the walking trail until you come to Flinders Drive. Turn right onto Flinders Drive then take the left fork down to Morgans Beach. At the beach, turn left and walk along the shore until you are below the lookout that overlooks the ferry terminal. Climb the hill to reach the lookout for superb views. Return either by the same route or by following the established trail along Main South Road. Signage along the trail provides information about the local environment and native plants.



Map prepared using a Google Maps base.