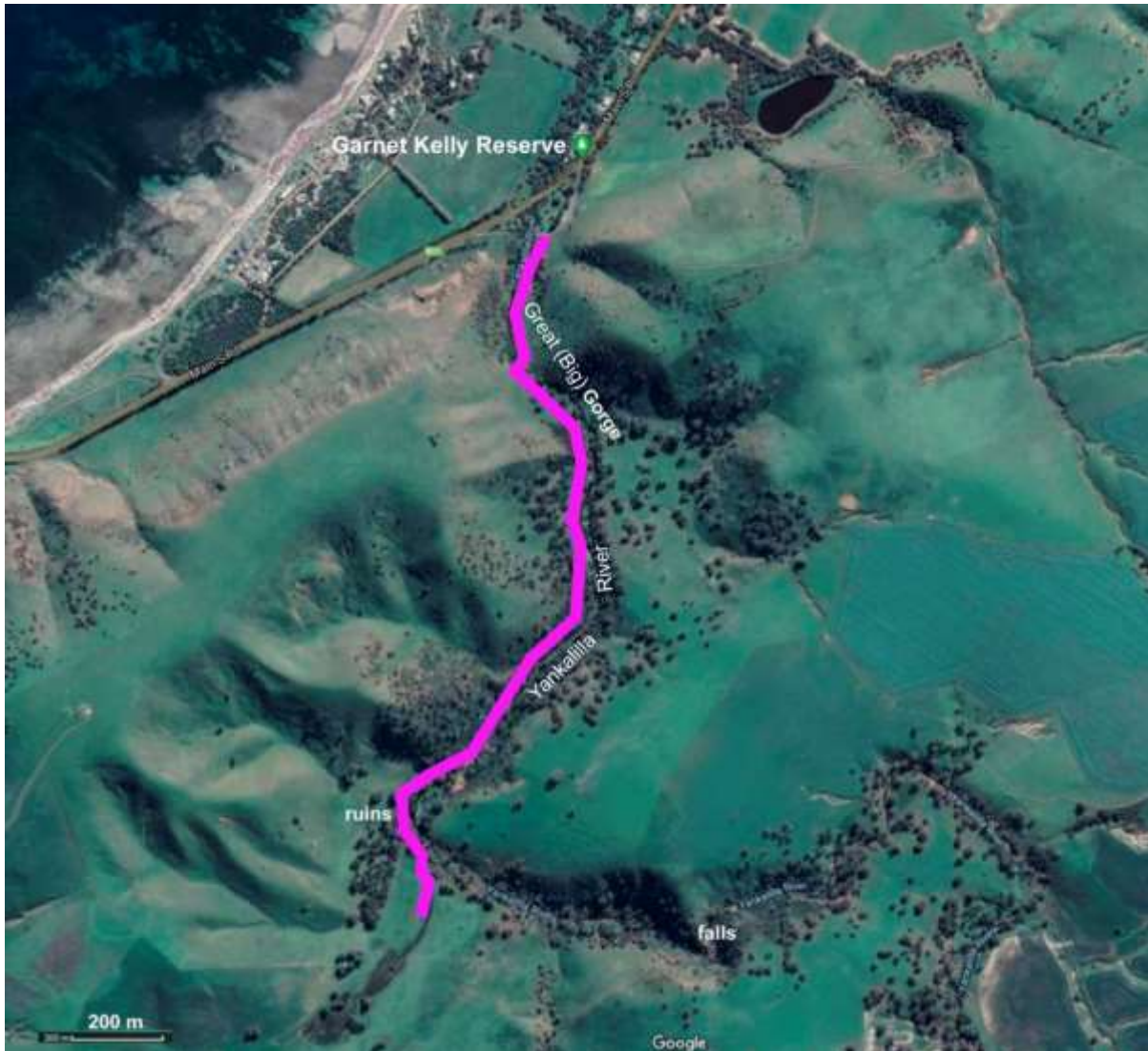


9. GREAT (BIG) GORGE

Terrain: Easy

Distance: 3.6 km return

This gentle walk follows the middle reaches of Yankalilla River. It is well signposted, with explanatory panels at significant points. The walk begins at Garnet Kelly Reserve, on the southeastern side of Main South Rd about 3 km south of Normanville. There is an access gate with introductory panels toward the southern end of the reserve. Follow the trail markers along the river. Toward the end of the trail are ruins dating from the 1850s; this gorge was sometimes used as an alternative coach road from Adelaide to Cape Jervis. The trail ends a little beyond the ruins. Return to Garnet Kelly Reserve by the same route.



Map prepared using a Google Maps base.